

Right of Way Segment Explanation—Image 1



Proposed Right of Way (ROW) Project

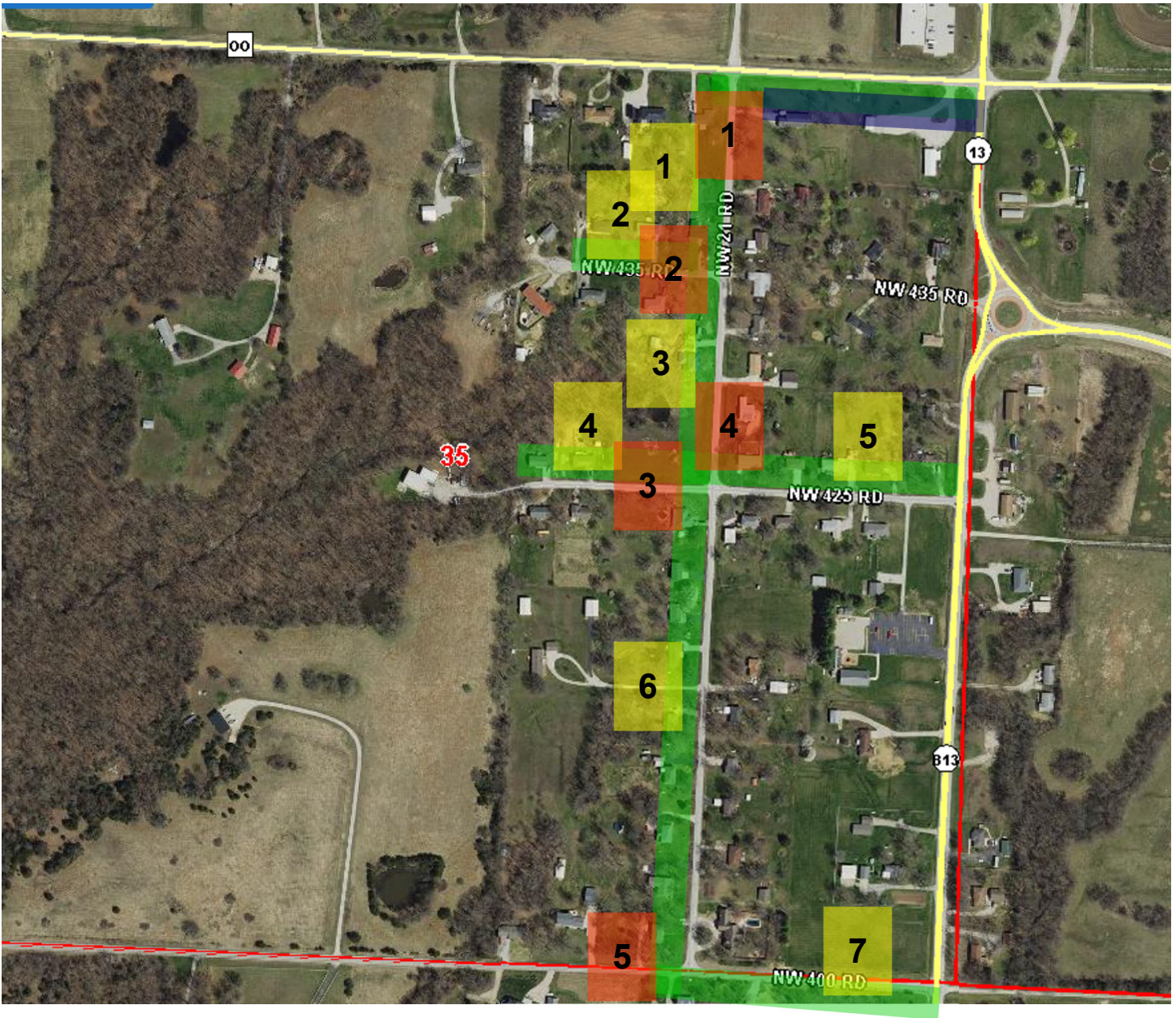
Perpendicular Segments This project has 3 Perpendicular Bore Segments.
 A **Perpendicular Segment** crosses a county-maintained road at an angle near or at 90 degrees and connects the project path to the opposite side of the roadway .

Parallel Segments This project has 6 Parallel Bore Segments.
 A **Parallel Segment** runs from one road intersection to the next road intersection along the project path.

Project Area Denied (other entity's ROW)

Type of Cut	Segments	Bond per	Bond Due	Fee per	Fees Due
Perpendicular	3 x	\$5,000 =	\$15,000	\$150 =	\$450
Parallel	6 x	\$50,000 =	\$300,000	\$250 =	\$1,500
TOTAL			\$ 315,000		\$ 1,950

Right of Way Segment Explanation—Image 2



Proposed Right of Way (ROW) Project

Perpendicular Segments This project has 5 Perpendicular Bore Segments.

A **Perpendicular Segment** crosses a county-maintained road at an angle near or at 90 degrees and connects the project path to the opposite side of the roadway .

Parallel Segments This project has 6 Parallel Bore Segments.

A **Parallel Segment** runs from one road intersection to the next road intersection along the project path.

Project Area Denied (other entity's ROW)

Type of Cut	Segments	Bond per	Bond Due	Fee per	Fees Due
Perpendicular	5 x	\$5,000 =	\$25,000	\$150 =	\$750
Parallel	7 x	\$50,000 =	\$370,000	\$250 =	\$1,750
TOTAL			\$ 395,000		\$ 2,500